

SOUTH EASTERN EDUCATION AND LIBRARY BOARD



**STRATEGIC REVIEW OF PROVISION IN THE
CASTLEREAGH DUAL CARRIAGEWAY AREA**

FEBRUARY 2006

Strategic Review of Provision – Castlereagh Dual Carriageway

Foreword

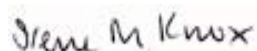
Last year the Board published its Strategic Capital Development Plan 2004-2009. That plan indicated the Board's intention to carry out reviews of school provision in various geographical areas. A Draft Review was undertaken in relation to the Castlereagh Dual Carriageway area and issued for consultation in April. The Board welcomed the comments received from schools and others and after careful consideration this revised document has been adopted.

The Strategic Review of Provision outlines the main issues impacting on the Board's school estate in this area. In particular the implications of declining school aged population and existing spare capacity will have to be addressed. The current condition of school buildings and the suitability of accommodation for the delivery of a modern curriculum are also areas of concern. Various example proposals are made to show some of the options which will be considered in order to resolve these issues, but it must be remembered that these represent only some of a number of possible options for the way forward and they should not be viewed as definitive.

The purpose of these reviews is to provide a strategic framework in which to progress a prioritised programme of capital development schemes. Each scheme arising from the reviews will be subject to economic appraisal of a range of options, the publication of development proposals where appropriate, statutory approvals such as planning permission and financial approval from the Department of Education. Therefore the implementation of the final reviews will include further involvement and consultation with relevant schools and might take 10-15 years to complete. Naturally the Board will monitor enrolment trends and other information during that time and any material change in circumstances may lead to further review of proposals.

At this time, in the light of demographic trends and the issue of surplus capacity in some schools, it is important that we look strategically across our schools estate to make sure that any decisions in relation to capital planning and development are taken after full consideration of all available information. We will continue to work closely with our schools as the strategic plans are implemented.

The Strategic Reviews of Provision will be published on the Board's website at www.seelb.org.uk.



Irene Knox
Chief Executive
South Eastern Education and Library Board

February 2006

1.0	BACKGROUND	4
2.0	CURRENT PRE SCHOOL PROVISION	9
2.1	CURRENT PRIMARY PROVISION	10
2.2	CURRENT POST PRIMARY PROVISION	13
2.3	FUTURE DEMAND	15
2.4	POSSIBLE SOLUTIONS	16
2.4.1	Primary	16
2.4.3	Post Primary	24
	APPENDIX A – PRIMARY SCHOOLS	30
A1	BELVOIR PARK PRIMARY SCHOOL	31
A2	BRANIEL PRIMARY SCHOOL	33
A3	CAIRNSHILL PRIMARY SCHOOL	35
A4	CREGAGH PRIMARY SCHOOL	37
A5	GILNAHIRK PRIMARY SCHOOL	39
A6	KNOCKBREDA PRIMARY SCHOOL	41
A7	LEADHILL PRIMARY SCHOOL	43
A8	LISNASHARRAGH PRIMARY SCHOOL	45
A9	NEWTOWNBREDA PRIMARY SCHOOL	47
	APPENDIX B – POST PRIMARY SCHOOLS	49
B1	KNOCKBREDA HIGH SCHOOL	50
B2	LISNASHARRAGH HIGH SCHOOL	52
B3	NEWTOWNBREDA HIGH SCHOOL	53

Review of controlled provision in the Castlereagh dual carriageway area.

1.0 Background

This review will examine the long term requirements of controlled pre school, primary and post primary schools located alongside or close to the stretch of road incorporating the Upper Knockbreda Road, Belvoir Road and Knock Road.

The review will include the following SEELB nursery, primary and post primary schools:

- Belvoir Park Primary School + Special unit + Nursery Unit
- Braniel Primary School + Nursery Unit
- Cairnshill Primary School + Nursery Unit
- Cregagh Primary School + Special Unit
- Gilnahirk Primary School
- Knockbreda Primary School + Special Unit
- Leadhill Primary School
- Lisnasharragh Primary School
- Newtownbreda Primary School – proposed Nursery Unit
- Castlereagh Nursery School
- Knockbreda Nursery School
- Knockbreda High School
- Newtownbreda High School
- Lisnasharragh High School

The document will also detail the integrated primary and post primary schools operating in the area:

- Lagan College
- Lough View Integrated Primary School

This area is adjacent to the Belfast Education and Library Board. There are three primary schools, one controlled high school and one controlled grammar within the BELB which would have to be taken into account in the review document:

- Rosetta Primary School
- Forge Integrated Primary School
- Orangefield Primary School
- Orangefield High School
- Grosvenor Grammar School

1.1 The graph overleaf shows the population history of Castlereagh Borough Council for 0 – 18 year olds from 1991 projected to 2017. These figures have been obtained from the Northern Ireland Statistics and Research Agency. The table below is a comparison of the 1991 census and 2001 census data for 0 – 18 year olds for Castlereagh Borough Council and include projected figures up to 2017.

Age Group	1991 Census	2001 Census	2017 Projected figures	% Difference between 2001 - 2017
0 - 4	4166	4302	2993	-30.43
5 - 11	5226	6565	4220	-35.72
12 - 16	3601	4346	3649	-16.04
17 - 18	1600	1473	1633	10.86
	14,593	16,686	12,495	-25.12

This table clearly shows that the overall number of children in the Castlereagh Borough Council area has grown by approximately 13.2% between 1991 and 2001, with substantial growth in the 5 – 11 year olds and a slight fall in the 17 – 18 age group. This growth can be attributed to large housing developments in specific wards within the council area, i.e. Dundonald, Carrowreagh, Ballyhanwood, Moneyreagh, Carryduff East, Carryduff West, Beechill, Knockbracken and Cairnshill.

The projected figures show an anticipated decline in all age groups except the 17 – 18 year olds and overall the Council can expect a decline in schools aged population of 25.12% between the 2001 census and 2017.

The map and table overleaf have been obtained from the Northern Ireland Statistical Research Agency and shows the population, or frequency, distribution throughout the council by ward area. It is evident from this data that certain areas of the council hold higher percentages of the total council population, i.e. those areas in blue to dark green, when compared to other areas, i.e. those areas in light green. This is in keeping with the areas of development with the council.

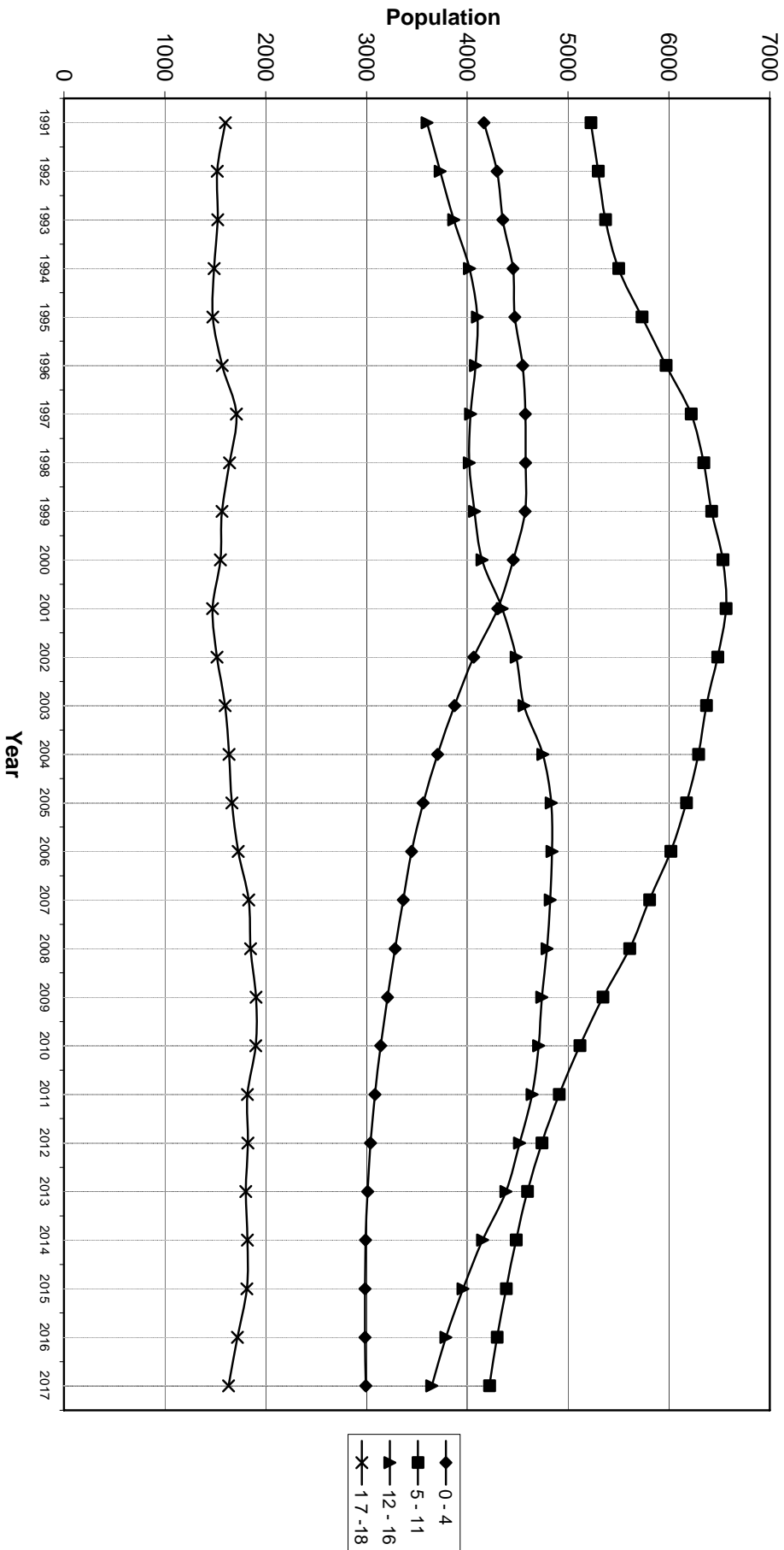
The post primary schools within Castlereagh Borough Council attract a number of children from primary schools within Belfast City Council therefore the current and projected demographics for BCC must be taken into consideration. As with the table for CBC the table below is a comparison of the 1991 census and 2001 census data for 0 – 18 year olds for Belfast City Council and include projected figures up to 2017.

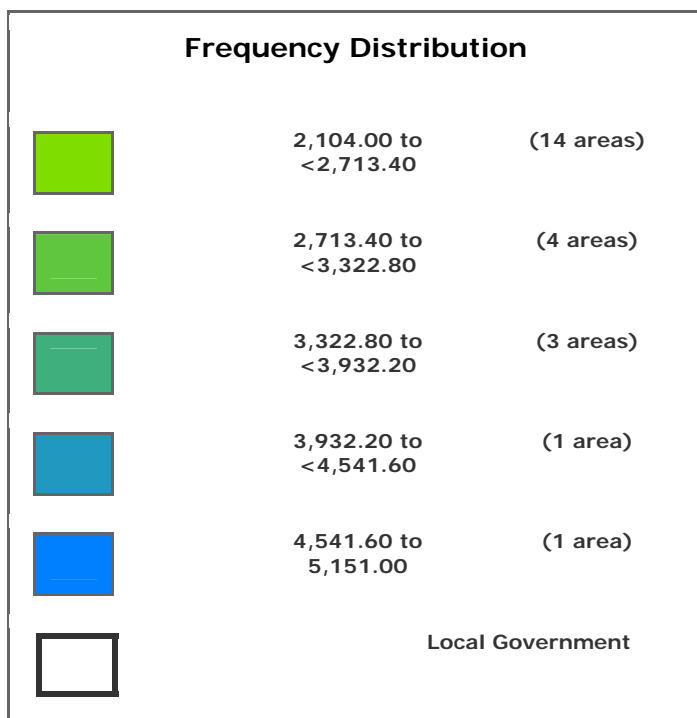
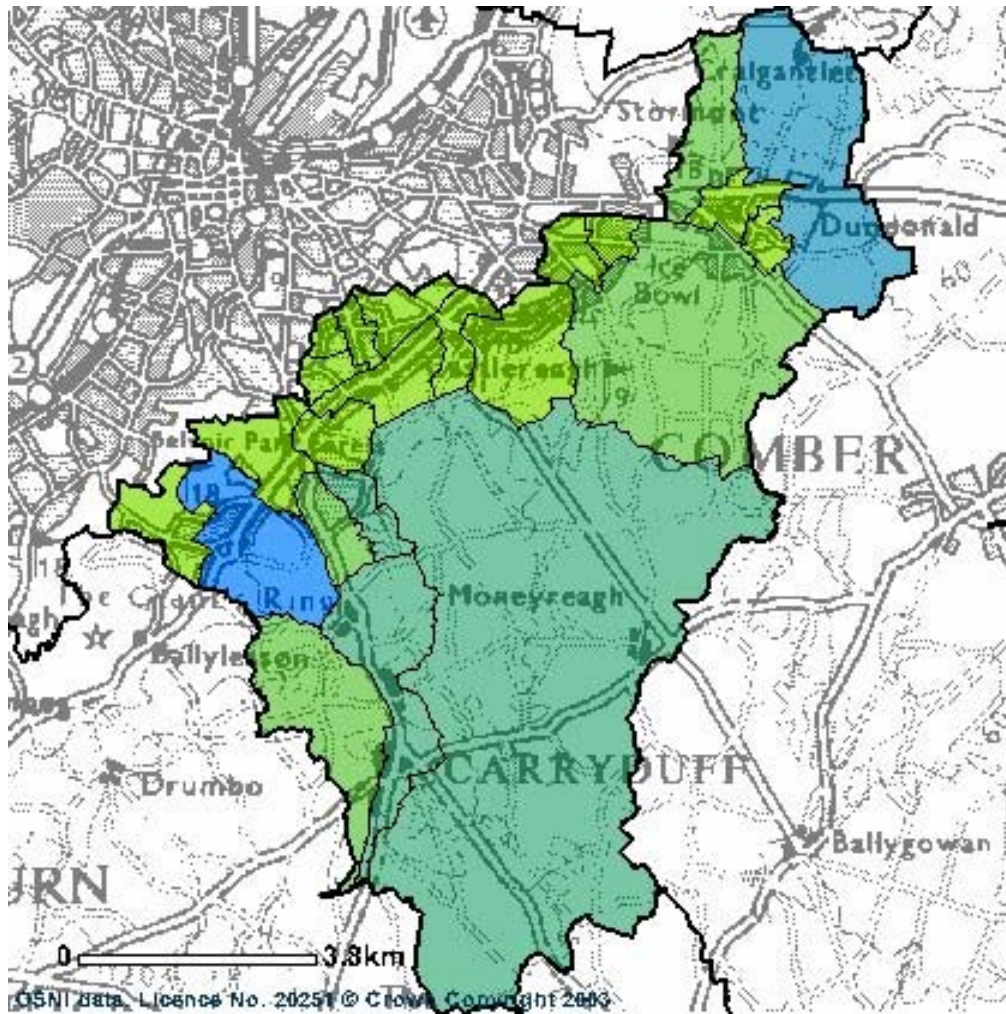
Age Group	1991 Census	2001 Census	2017 projected figures	% difference between 2001 & 2017
0 - 4	22,716	16,499	13,036	-20.99
5 - 11	29,405	26,521	17,445	-34.22
12 - 16	19,029	21,214	12,662	-40.31
17 - 18	8,428	8,251	6,003	-27.25
	79,578	72,485	49,146	-32.20

This table clearly shows that the overall number of children in the Belfast City Council area has steadily declined since the 1991 census and is projected to drop by 32.2% by 2017. The projected fall in the number of primary aged pupils must be factored into any plans for post primary provision in the Castlereagh post primary schools.

The potential for future housing developments as indicated under the Belfast Metropolitan Area Plan and approved housing applications will largely be limited to these same wards. It is estimated that under BMAP 4,300 additional houses will be constructed over the life time of the plan – approximately 1,000 houses will be constructed in Dundonald and the remaining houses will be largely located in the Carryduff, Moneyreagh and Knockbracken areas.

Castlereagh Borough Council School Age Population
1991 to 2017





2.0 Current pre School provision

2.0.1 Within the Castlereagh dual carriageway area there is a total of 104 SEELB controlled pre school places, 52 provided at Castlereagh Nursery School and 52 at Knockbreda Nursery School.

2.02 In addition there are seven nursery units and voluntary playgroups operating in the area which provide additional pre school places:

Location	Provision
Cairnshill Primary School	52 part time
Braniel Primary School	52 full time
Belvoir Primary School	52 full time
Loughview Integrated Primary School	26 part time
Cregagh Pre School Group	20 places funded
Mount Oriel Playgroup	15 places funded
St Bernards Pre School Group	23 places funded

In addition a new nursery unit has been proposed at Newtownbreda Primary School to replace its reception class which would provide an additional 26 part time places.

Providers	P1 (Oct 04)	Nursery	Vol	Rec
Cregagh PS	24			
Cregagh Pre School Group			20	
Loughview IPS	59	26		
Leadhill PS	19			
Cairnshill PS	50	52		
Lisnasharragh PS	28			
Castlereagh NS	0	52		
Braniel PS	43	52		
Belvoir PS	27	52		
Newtownbreda PS	20			6
Mount Oriel Playgroup			15	
St. Bernards PS	52			
St. Bernards Pre School Group			23	
Knockbreda PS	14			
Knockbreda NS		52		
Totals	336	286	58	23
				367
% Provision				109.23

This equates to 109.23% pre school provision in Castlereagh which is above the 90% target figure.

2.0.3 Overall the number of available pre school places in the area, inclusive of units / voluntary and nursery school, exceeds the level of demand. This has resulted in a reduction of provision in Braniel and Belvoir Nursery Units and Knockbreda Nursery School from 78 places to 52 full time places in each case.

2.1 Current primary provision

2.1.1 Within the Castlereagh dual carriageway area there is a total of 3,228 SEELB controlled primary places, with 451 for year 1 intake. In addition there are three BELB primary schools which operate close to the carriageway area, two are controlled primary schools and the third is a controlled integrated primary school. These schools provide a total of 924 controlled primary and 250 controlled integrated places.

2.1.2 The table below indicates the enrolment and admission history of the SEELB controlled primary schools operating within the Castlereagh dual carriageway area:

Year	Admission	Enrolment
1995/96	399	2758
1996/97	400	2798
1997/98	383	2826
1998/99	386	2853
1999/00	350	2812
2000/01	326	2774
2001/02	373	2743
2002/03	348	2627
2003/04	349	2573
2004/05	278	2461

Based on a total of 3,228 primary school places being available in the area the number of surplus places currently stands at 767. It is likely that this level of over provision will increase in the future due to falling demographics in the area and the lack of any substantial housing development which would contribute additional children to the controlled primary schools.

2.1.3 Of the three BELB primary schools providing controlled primary places Rosetta Primary School's enrolment has been steadily declining over the last six years:

1999/2000	2000/2001	2001/2002	2002/2003	2003/2004	2004/2005
236	212	194	176	159	149

A capital project has been approved for Rosetta Primary School which proposes to reduce the school to a seven classbase school as this would be more in keeping with the school's current and future requirements. This project will be undertaken as part of a PPP project. However this enrolment projection should be kept under review due to the continuing fall in enrolments of the majority of schools in the area, both in the SEELB and BELB.

Forge Integrated Primary School's enrolment has remained relatively steady over this same period.

1999/2000	2000/2001	2001/2002	2002/2003	2003/2004	2004/2005
214	220	228	210	214	202

Orangefield Primary School's enrolment has grown slightly over these six years.

1999/2000	2000/2001	2001/2002	2002/2003	2003/2004	2004/2005
434	461	457	476	469	452

Orangefield Primary School has recently been included in a PPP project which will result in a replacement school. The new school will provide a total 500 of places.

- 2.1.5 There is only one grant maintained integrated primary school operating in the carriageway area, Loughview Integrated Primary School. This school's enrolment has continued to grow since the school opened in 1993 and a large extension is currently being completed at the school to cope with the increase in demand for places. Upon completion the school will be able to take a maximum of 377 pupils.

2001/2002	2002/2003	2003/2004	2004/2005
267	286	328	377

- 2.1.6 The following table is an analysis of the total percentage of surplus places available at each of the SEELB controlled primary schools over the past three years. The only school which has had an adjustment of their total Department of Education figure within the last three years is the new Cregagh Primary School which has had its number reduced from a twelve classbase to a seven classbase school, i.e. from 345 pupils to 203.

REVIEW PAPER

February 2006

YEAR	SCHOOL NAME	% Surplus Places
2004/2005	BELVOIR PARK	28.38
2003/2004	BELVOIR PARK	17.84
2002/2003	BELVOIR PARK	22.43
2001/2002	BELVOIR PARK	14.32

YEAR	SCHOOL NAME	% Surplus Places
2004/2005	BRANIEL	26.96
2003/2004	BRANIEL	23.28
2002/2003	BRANIEL	17.89
2001/2002	BRANIEL	20.59

YEAR	SCHOOL NAME	% Surplus Places
2004/2005	CAIRNSHILL	10.81
2003/2004	CAIRNSHILL	4.12
2002/2003	CAIRNSHILL	4.29
2001/2002	CAIRNSHILL	3.77

YEAR	SCHOOL NAME	% Surplus Places
2004/2005	CREGAGH	21.67
2003/2004	CREGAGH	28.57
2002/2003	CREGAGH	24.14
2001/2002	CREGAGH	25.12

YEAR	SCHOOL NAME	% Surplus Places
2004/2005	GILNAHIRK	5.84
2003/2004	GILNAHIRK	5.17
2002/2003	GILNAHIRK	6.07
2001/2002	GILNAHIRK	2.47

YEAR	SCHOOL NAME	% Surplus Places
2004/2005	LEAD HILL	14.29
2003/2004	LEAD HILL	11.43
2002/2003	LEAD HILL	9.05
2001/2002	LEAD HILL	7.14

YEAR	SCHOOL NAME	% Surplus Places
2004/2005	LISNASHARRAGH	39.82
2003/2004	LISNASHARRAGH	35.35
2002/2003	LISNASHARRAGH	30.43
2001/2002	LISNASHARRAGH	25.06

YEAR	SCHOOL NAME	% Surplus Places
2004/2005	KNOCKBREDA	27.11
2003/2004	KNOCKBREDA	24.44
2002/2003	KNOCKBREDA	19.56
2001/2002	KNOCKBREDA	2.67

YEAR	SCHOOL NAME	% Surplus Places
2004/2005	NEWTOWNBREDA	44.51
2003/2004	NEWTOWNBREDA	45.10
2002/2003	NEWTOWNBREDA	43.03
2001/2002	NEWTOWNBREDA	38.87

Below is a brief description of the surplus numbers at the SEELB primary schools for 2004/2005, detailed enrolment information for each school is given in Appendix A:

SCHOOL NAME	Total School Surplus	P1 Surplus
BELVOIR PARK	105	26
BRANIEL	110	15
CAIRNSHILL	63	33
CREGAGH	44	5
GILNAHIRK	26	7
KNOCKBREDA	61	16
LEAD HILL	30	11
LISNASHARRAGH	178	32
NEWTOWNBREDA	150	28
Total	767	173

2.2 Current post primary provision

2.2.1 Within the Castlereagh dual carriageway area there is a total of 2,100 SEELB controlled post primary places, with 416 places available for year 8 intake plus a grant maintained integrated secondary school providing 1,080 places, with 200 places for year 8. In addition there are two BELB post primary schools which operate close to the carriageway area, one is a controlled post primary school and the second is a controlled grammar school. These schools provide a total of 446 controlled secondary places and 1,075 controlled grammar places. The post primary schools in both the SEELB and BELB share a number of main contributory primary schools.

The table below indicates the enrolment and admission history of the SEELB controlled post primary schools, together with the total enrolment of the main contributory primary schools operating within the Castlereagh dual carriageway area

	2000/2001	2001/2002	2002/2003	2003/2004	2004/2005	2005/2006
Year 8 Places	325	351	368	368	303	264
Total School Places	1778	1769	1741	1772	1722	1667
Total Post Primary Capacity	2100	2100	2100	2100	2100	2100
Total School surplus	322	331	359	328	378	433
Total MCPS enrolment	6,073	5,960	5,882	5,688	5,482	5,242

The 2005/2006 data is based on the 2005 transfer results as supplied on 27th May 2005. These figures are only indicative and are subject to adjustment.

The table above shows that the SEELB schools in the area have been operating with an increasing number of surplus places. Analysis of the enrolment trends of the main contributory primary schools to the post primary schools indicates the declining pool of children who will require a post primary place in the future and the 2004/2005 enrolment data shows the trend continuing. Overall the number of controlled post primary places required in the carriageway area will reduce.

2.2.2 The two BELB post primary schools operating in the area, Orangefield High School and Grosvenor Grammar School are to be replaced as part of a PPP project. These schools are to be built for 420 and 1,075 pupils respectively and the approved long term enrolments will be kept under review during all stages of the procurement process. The enrolment history for Orangefield High School is

2001/2002	2002/2003	2003/2004	2004/2005
588	514	443	388

2.2.3 Lagan College is the only grant maintained integrated secondary school in the area and is currently included in a proposed PPP project which would result in a 1,200 pupil post primary school.

2.2.5 The following is a brief description of the enrolment pattern at the SEELB post primary schools, detailed information is given in Appendix B:

Post Primary School	Surplus	Enrolment Pattern
Knockbreda	45	increasing enrolment
Newtownbreda	25	increasing enrolment
Lisnasharragh	308	continual decline

All three schools have maintained a percentage of surplus places over the past six years however only Lisnasharragh High School has witnessed a steadily increasing surplus over this period as shown in the table below.

	% of Surplus Places					
	2004/2005	2003/2004	2002/2003	2001/2002	2000/2001	1999/2000
Knockbreda	6.43	3.86	4.14	3.43	4.86	5.14
Newtownbreda	6.47	1.53	5.29	5.53	7.53	8.94
Lisnasharragh	56	52.36	51.82	47.27	40.73	32.18

The pattern clearly shows that, when compared to the neighbouring schools, Lisnasharragh High School is continually operating with a large percentage of surplus places.

2.3 Future demand

2.3.1 The main developments that will impact on the schools along the carriageway are located in the Cairnshill and Knockbracken areas. An estimated 600 houses will be released in an area designated as Whitelands. There are several other areas that may be released under BMAP however these proposed areas are small and will be primarily low density housing which would not have a major impact on controlled primary provision in the area.

An analysis of the religious break down of the Knockbracken and Cairnshill areas would indicate 41% from a catholic background and 53% from a protestant background. Applying these percentages to the future housing in the area and multiplying this by the extraction figure of 0.231 per household the number of children requiring controlled primary provision is estimated as follows:

$(600 \times 41\%) \times 0.231 = 57$ additional controlled primary places required.

In turn these additional children will require controlled post primary places at one of the three SEELB controlled high schools in the area. On the basis of recent transfer patterns it is estimated that 20% of these children would attend one of these schools, which equates to 11 additional children requiring a controlled post primary place.

2.3.2 The nearest controlled primary schools to the proposed new housing generating the 57 additional children are Cairnshill and Newtownbreda Primary Schools.

2.3.3 Cairnshill Primary School has grown over the past eight years and at 2004/2005 there were 520 pupils attending the school with 63 surplus places available throughout the school. Newtownbreda Primary School had 187 pupils at the school and 150 surplus places available at the school.

2.3.4 The level of additional places required in the area can be absorbed between these two schools although there is only limited potential available at Cairnshill Primary School as the school site is approaching the maximum possible.

2.3.5 It should be noted that some of the above additional primary aged children may seek places in the grant maintained integrated sector, i.e. Lough View IPS or Millennium IPS in Carryduff. Therefore the impact of future housing on the controlled schools may be less than indicated above.

2.3.6 Overall it is clear that there will continue to be an over provision of primary school places in the area, primarily due to the large number of controlled primary schools competing for a relatively small pool of children.

2.3.7 Those children from the new housing which require a controlled post primary place, approximately 11, can easily be accommodated at one of the three controlled secondary schools.

2.4 Possible solutions

2.4.1 Primary

The Castlereagh dual carriageway area is over provided for in controlled primary school places as indicated by the high number of surplus places available in the area as detailed in 2.1.6.

When the enrolments for each school are examined over the past eight years it becomes apparent that certain schools have been operating continually with a relatively small surplus while others have either had a large surplus for a number of years or are showing signs of a pattern of increasing surplus places.

A number of factors were taken into consideration in order to formulate a strategy to deal with the surplus places in the Castlereagh carriageway area:

- (a) The location of the schools and their proximity to neighbouring schools,
- (b) The condition and suitability of the existing accommodation and sites at the schools and any works at these schools, either planned or completed, which may alter this accommodation,
- (c) The demographics of the area,
- (d) The future needs and demands that are likely to be placed on the schools, and
- (e) The enrolment history of the schools and the level of over or under provision at each school.

Each school's enrolment has been investigated to establish a long term enrolment figure. This investigation took into consideration the projected fall in population figure in the area and a LTE range for each school was calculated. For planning purposes it has been decided to take the mean figure of this range.

Examination of these factors has resulted in the following:

- (a) Belvoir Primary School serves a defined area and provides special educational facilities and pre school education plus accommodates a youth club on the school site. The closest controlled primary school is Newtownbreda Primary School which is approximately 1.395Km north. The school does have some surplus places and has a long term enrolment mean of 218 (plus two additional classrooms for the special unit) which would indicate that a level of surplus requirement will remain at the school.
- (b) Braniel Primary School also serves a defined community and has a pre school facility of 52 full time pupils located at the school site. The school is approximately 1.470Km from Gilnahirk Primary School and 2.3Km from Leadhill Primary School. The LTE mean of 257 would indicate that the level of surplus places will increase in the future.
- (c) Cairnshill Primary School's enrolment has been growing steadily over the past eight years and the Board has recently completed an extension. A pre school is also located at the school. This school is at the current capacity of the site however with a LTE mean of 379 it is likely that some surplus places will become available in the future. The proposed new developments will only generate the need for 57 additional places spread over the life time of the development, which could take 10 years. The school is approximately 880m from Newtownbreda Primary School and 1.890Km from Belvoir Primary School.
- (d) Cregagh Primary School is a new school completed in 2002. At present the school has a significant number of surplus places, however this may be attributed to the poor enrolment and perceptions carried over from the previous poor accommodation which discouraged many parents of in the area from sending their children to the school. The school is located close to two other SEELB schools, approximately 933m from Lisnasharragh Primary School and 865m from Knockbreda Primary School and close to a BELB school, Rosetta Primary School. The LTE mean of 132, plus two additional classbases for the special unit, would indicate that the level of surplus places will remain in the future.

- (e) Gilnahirk Primary School has a strong enrolment and a LTE mean of 324 would indicate that the school has a future but some surplus provision will be provided however at present the school has only 26 surplus places available. The school is located approximately 1.470Km from Braniel Primary School and 850m from Tullycarnet Primary School. Gilnahirk Primary School should remain in operation for the foreseeable future and the Board should examine the school's accommodation in order to fully redress any sub standard accommodation at the school and carry out periodic reviews of the long term enrolment.
- (f) Knockbreda Primary School's enrolment has been falling consistently over the past five years and the school currently has 61 surplus places at the school. The school is located very close to several other controlled primary schools, approximately 1.4Km to Lisnasharragh Primary School, 865m to Cregagh Primary School and close to Rosetta Primary School. The school has a LTE mean of 104, plus two additional classbases for the special unit, which would indicate that it is likely that the level of surplus provision at the school will increase in the future.
- (g) Leadhill Primary School's enrolment has dropped slightly over the past eight years however the school does provide controlled education to a defined area south of the carriageway and the LTE mean figure of 128 would indicate that it will have a future however the number of surplus places at the school is likely to increase. The school is approximately 2.300Km from Braniel Primary school and 927m from Lisnasharragh Primary School. In addition Lough View Integrated Primary School, a grant maintained integrated, is only 600m from the school.
- (h) Lisnasharragh Primary School's enrolment has been declining steadily over the past eight years and the school is currently operating with 178 surplus places. The school is approximately 1.400Km from Knockbreda Primary School and 865m from Cregagh Primary School. The LTE mean of 202 indicates that the level of surplus places is likely to continue into the future.
- (i) Newtownbreda Primary School's enrolment has been declining steadily over the past eight years and the school is currently operating with 150 surplus places. The school is approximately 1.395Km from Belvoir Primary School and 880m from Cairnshill Primary School. The LTE mean of 125 indicates that the current level of surplus places is likely to continue into the future.

Allowing for the points in 2.4.4 and 2.4.5 the following is proposed:

- (1) The proximity of Cregagh, Knockbreda and Lisnasharragh Primary Schools to each other, together with the number of surplus places between the three schools, would indicate a need to reduce the level of controlled provision in this area. Cregagh Primary School is located in a new school building less than two years old whereas the accommodation at Knockbreda and Lisnasharragh Primary Schools is sub standard in a number of aspects. Therefore it is suggested that the Board investigate the following possibilities:
 - (a) Closing Lisnasharragh Primary School and relocate the children between Knockbreda Primary School and Cregagh Primary School, or
 - (b) Amalgamate Lisnasharragh and Knockbreda Primary Schools at one of the sites either in a new build school or an extended and refurbished school.

In response to the initial consultation document Knockbreda Primary School indicated that it was preparing to consult with its parents over the possible transformation of the school from a controlled primary school to a controlled integrated primary school; this consultation has begun but is at an early stage. Such a transformation would limit potential partners for amalgamation as such rationalisations must be contained with specific sectors, i.e. controlled, maintained, integrated etc.

Lisnasharragh Primary School has indicated its preference for an amalgamated school to be built on the current Lisnasharragh site.

An economic appraisal would be required in order to fully examine all possible options, including those put forward by the schools.

- (2) Belvoir Park, Braniel and Leadhill Primary Schools all serve defined areas and their respective long term enrolment projection figures indicate that the schools have a future, although some level of surplus provision will remain at each school. These schools should remain in operation for the foreseeable future and the Board should examine each school's accommodation in order to fully redress any sub standard accommodation. Periodic reviews of the long term enrolment should be carried out to ensure the level of surplus provision at the schools does not increase.
- (3) Gilnahirk Primary School also serves a defined community and has a strong enrolment figure and with an LTE mean of 324 it is likely to have a future. However the school is located close to a school not included within this document, Tullycarnet Primary School, which has been declining for a number of years. Gilnahirk Primary School should remain in operation for the foreseeable future and the Board should initiate a separate review of Gilnahirk and Tullycarnet Primary Schools in order to assess the most appropriate method of controlled provision between these two schools. Periodic reviews of the long term enrolment should be carried out to ensure the level of surplus provision at the school does not increase.
- (4) The Board of Governors of Newtownbreda Primary School responded to the consultation document indicating that the amalgamation of Cairnshill and Newtownbreda Primary Schools would provide the best future for children and staff. The Governors of Cairnshill Primary School indicated that a new school building was urgently required to provide for the children of the area.

An economic appraisal would be required in order to fully examine all possible options relating to these schools.

The table overleaf shows three sample scenarios on how the long term primary requirements in the area could be met.

REVIEW PAPER

February 2006

Sample Option 1	Places Provided	Current Classbases	Proposed Classbases
Retain Cregagh at current level	203	7	7
Retain Leadhill at current level	210	8	8
Retain Cairnshill at current level	583	20	20
Retain Gilnahirk at current level	445	16	16
Reconfigure Belvoir in keeping with mean LTE	230	13	8
Reconfigure Braniel in keeping with mean LTE	260	14	9
Reconfigure Newtownbreda in keeping with mean LTE	145	12	5
Amalgamate Lisnasharragh / Knockbreda	306	16 / 8	11
Total Controlled Places available under option	2,382		
Total Controlled Places currently available	3,228		
Total reduction in places available	846		
Sample Option 2			
Retain Cregagh at current level	203	7	7
Retain Leadhill at current level	210	8	8
Retain Gilnahirk at current level	445	16	16
Reconfigure Belvoir in keeping with mean LTE	230	13	8
Reconfigure Braniel in keeping with mean LTE	260	14	9
Amalgamate Lisnasharragh / Knockbreda	306	8 / 16	11
Amalgamate Cairnshill / Newtownbreda	505	20 / 12	18
Total Controlled Places available under option	2,159		
Total Controlled Places currently available	3,228		
Total reduction in places available	1,069		
Sample Option 3			
Retain Cregagh at current level	203	7	7
Retain Gilnahirk at current level	445	16	16
Retain Cairnshill at current level	583	20	20
Reconfigure Belvoir in keeping with mean LTE	230	13	8
Reconfigure Braniel in keeping with mean LTE	260	14	9
Amalgamate Knockbreda / Newtownbreda	229	8 / 12	8
Amalgamate Lisnasharragh / Leadhill	330	16 / 8	12
Total Controlled Places available under option	2,280		
Total Controlled Places currently available	3,228		
Total reduction in places available	948		

As stated previously the Board would take the view that the most appropriate LTE to follow would be the mean figure. This would achieve a reduction in excess of the level of surplus provision in the area.

Those schools retained at their current sizes, i.e. Cairnshill, Leadhill, Gilnahirk and Cregagh Primary Schools, would be reviewed on a periodic basis and should their respective enrolments continue to decline then action would be taken to reconfigure the schools more in keeping with their long term needs.

Those primary schools that have responded to the initial consultation document have recognised that the current, and forecasted, decline in enrolments in the area will directly impact on the schools and have, in general terms, welcomed the SEELBs strategic response to this issue. However many have voiced concerns over the sample options detailed overleaf and some have put forward alternative options for consideration.

Any options contained within the consultation document are only samples and are not meant to be a definitive list. Those additional options put forward by schools within their individual responses will be considered in more detail within any economic appraisal which may arise from this consultation process.

The estimated LTE for all the schools will be kept under review and refined in response to future circumstances.

2.4.2 Pre School

There is a definite need for some pre school provision within the Castlereagh dual carriageway area however the level of provision currently exceeds the demand for pre school places. There are seven nursery units in operation within the area, as indicated in 2.02 and there is a current proposal to locate a new nursery unit at Newtownbreda Primary School. This unit would provide 26 places to replace the current reception class.

Due to falling demand Braniel and Belvoir Nursery Units and Knockbreda Nursery School have reduced from 78 places, 26 full time and 52 part time, to 52 full time in each case.

The Department of Education has recently published a consultation document on the future of pre school education in Northern Ireland

The possible options for consideration are:

- (a) Do nothing. This will retain the current level of 52 places at both Knockbreda and Castlereagh Nursery Schools. This option makes the assumption that no further reduction in pre school provision will be required in the future.
- (b) Amalgamate both nursery schools into a single nursery to be located at either Knockbreda, Castlereagh or another location.
- (c) Close both nursery schools and rely on the private and voluntary sectors in the area to provide the necessary pre school provision.

Of the three options the Board would recommend that the two nursery schools amalgamate and the new provision be provided in a new build nursery school at one of the school sites. An economic appraisal should be undertaken in order to identify the most appropriate option for the long term pre school needs.

Those schools that have responded to the initial consultation document have recognised that the current, and forecasted, decline in enrolments in the area will directly impact on the schools and have, in general terms, welcomed the SEELBs strategic response to this issue. However many have voiced concerns over the sample options detailed above and some have put forward alternative options for consideration.

Any options contained within the consultation document are only samples and are not meant to be a definitive list. Those additional options put forward by schools within their individual responses will be considered in more detail within any economic appraisal which may arise from this consultation process.

All of the options detailed are dependant on the findings of the Department of Education's review of pre school provision.

2.4.3 Post Primary

The Castlereagh dual carriageway area is over provided for in controlled post primary school places as indicated by the 378 surplus places available in the area as detailed in 2.2.5.

When the enrolments for each of these schools are examined for the past eight years, as shown on the table overleaf, it is apparent that certain schools have been operating continually with a relatively small surplus for a number of years while others have either had a large surplus for a number of years or are showing signs of an increase in surplus places.

A number of factors were taken into consideration in order to formulate a strategy to deal with the surplus places in the Castlereagh carriageway area:

- (a) The location of the schools and their proximity to neighbouring schools,
- (b) The condition and suitability of the existing accommodation and sites at the schools and any works at these schools, either planned or completed, which may alter this accommodation,
- (c) The demographics of the area,
- (d) The future needs and demands that are likely to be placed on the schools, and
- (e) The enrolment history of the schools and the level of over or under provision at each school.

Examination of these factors has resulted in the following:

- (a) Knockbreda High School's enrolment has been increasing over the past eight years and in 2004/2005 there were 655 pupils enrolled at the school and 45 surplus places. The school is located approximately 1.384Km from Lisnasharragh High School and 1.449Km from Newtownbreda High School. Knockbreda High School is currently subject to an economic appraisal for a new build replacement high school for an approved long term enrolment of 675 pupils. This appraisal has been approved the Department of Education and is on the contenders list for advancement to new starts approval. The approved long term enrolment is subject to periodic reassessment and it is likely, based on the current calculation, that the LTE for any new school will fall to approximately 600 pupils.
- (b) Lisnasharragh High School's enrolment has been decreasing over the past eight years and in 2004/2005 there were 242 pupils enrolled at the school and 308 surplus places. With a mean LTE of 182 the number of surplus places is likely to increase in the future. The school is located approximately 1.384Km from Knockbreda High School and 2.788Km from Newtownbreda High School.
- (c) Newtownbreda High School's enrolment has been increasing over the past eight years and in 2004/2005 there were 825 pupils at the school and 25 surplus places. However in the long term the enrolment at the school is likely to decline, as shown by the mean LTE figure of 667. There is a direct correlation between the LTE figure and the falling trend in the enrolments at the main contributory primary schools as shown by the information in 2.2. The school is 2.788Km from Lisnasharragh High School and 1.449Km from Knockbreda High School.

Currently there are three post primary schools operating within close proximity to each other. This has led to two schools maintaining relatively good enrolments with a small number of surplus places while at the third the number of surplus places has been steadily increasing over the years. However the ongoing fall in the enrolments of the controlled primary schools in the area will have a knock on effect in the future on all of these controlled post primary schools.

Allowing for this and the points in 2.4.8 and 2.4.9 the following is proposed:

- (1) The economic appraisal for Knockbreda High School, recommending a replacement school for 675 pupils on the existing site, has been approved by the Department of Education. However as stated previously this LTE figure is subject to review and it is likely that the planned school will accommodate approximately 600 pupils. The new school will have a slightly smaller enrolment than the current school however this is in keeping with the decline in the primary aged children who will require a post primary place in the future. The Board should therefore allow this project to go forward as approved by the Department of Education.
- (2) The falling enrolment at Lisnasharragh High School will continue for the foreseeable future as it will have to continue to compete with its neighbouring schools. This decline will only get worse in the future as new replacement schools are built for Orangefield High School, Lagan College and Grosvenor Grammar School under PPP and a possible replacement school for Knockbreda High School. It is therefore appropriate to suggest that the Board actively seek a possible amalgamation of Lisnasharragh High School with another school. As Orangefield High School is already involved in a PPP project and Knockbreda High School has approval for major capital these may not be considered. Therefore an amalgamation of Newtownbreda High School with Lisnasharragh High School or with an alternative post primary school in the Castlereagh Borough Council area should be considered.

Newtownbreda High School's enrolment has been growing steadily over the past four years. However the long term enrolment calculation of 667 would seem to indicate that it is likely to decline over the next few years due to a fall in the enrolments of the main contributory primary schools.

The Board should investigate the possible amalgamation of Lisnasharragh High School with either Newtownbreda High School or another controlled post primary school in the Castlereagh Borough Council area.

If Lisnasharragh and Newtownbreda High Schools were to merge the basic long term enrolment calculation would result in a controlled post primary for 924 pupils located at either

- (a) an extended and refurbished Lisnasharragh or Newtownbreda High School,
- (b) a new build high school at one of the two school sites, or
- (c) a new build high school on a neutral greenfield or brownfield site.

However this calculation does not take into account the falling demographics and the decline in the enrolments of the main contributory primary schools as detailed at the start of this paper. Based on the statistics received obtained from the Northern Ireland Statistics and Research Agency the number of primary aged children in the Castlereagh Borough Council area is projected to fall by 35.72% and a drop of 34.22% is anticipated in the Belfast City Council area.

It would be appropriate to take these potential percentage drops into consideration when estimating the long term enrolment needs of any post primary school.

As stated previously the basic long term enrolment calculation for a merged Newtownbreda and Lisnasharragh High School is 924 however in order to plan for a school of an appropriate size the estimated fall in the primary cohort must be factored in.

The Board would take the view that the most appropriate LTE to follow would be the mean figure. This would achieve a reduction of surplus places in excess of the current level of over provision. However the forecasted falling trends in both the primary schools and local populace, and the approved plans for a replacement school for Orangefield High School which may have an impact on post primary requirements within the three SEELB post primary schools, would seem to dictate a conservative approach to the level of post primary provision required in the future.

In addition, as stated previously, there is already a proposal approved by the Department of Education to replace the current Knockbreda High School with a building with a long term enrolment of 675 pupils. However it is likely that this LTE will fall to approximately 600.

The following tables are sample scenarios which detail how the long term post primary requirements in the area could be met:

Sample Option A	Total Places
Replace Knockbreda High School with new build for	600
Amalgamate Lisnasharragh High School with another post primary *	182
Replace Newtownbreda High School with new build for	667
Total places available under options	1449
Total controlled places currently available	2100
Total reduction in places	651

Sample Option B	Places Provided
Replace Knockbreda High School with new build for	600
Amalgamate Lisnasharragh & Newtownbreda High Schools	849
Total places available under options	1,449
Total Controlled Places currently available	2,100
Total reduction in places	651

* - this proposal is the amalgamation of Lisnasharragh High School with another post primary school other than Knockbreda or Newtownbreda. A full investigation of possible partners is required.

Those schools that have responded to the initial consultation document have recognised that the continued, and forecasted, decline in enrolments in the area will directly impact on the schools and have, in general terms, welcomed the SEELBs strategic response to this issue. However there are concerns over the sample options detailed previously and some have put forward additional options for consideration.

Any options contained within the consultation document are only samples and are not meant to be a definitive list. Those additional options put forward by schools within their individual responses will be considered in more detail within any economic appraisal which may arise from this consultation process

The review of the post primary provision has taken account of the planned PPP projects for schools in the BELB and more specifically plans for Orangefield High School. However it is the Board's contention that the controlled post primary schools in the SEELB area, i.e. Knockbreda, Newtownbreda and Lisnasharragh, do not share main contributory primary schools and any plans for Orangefield High School would not impact on the future provision in the Castlereagh dual carriageway area.

This strategy would result in a reduction of places in excess of the 378 currently surplus, as indicated in 2.2.1, however the fall in demographics in the area, and the impact this will have on the contributory primary schools, must be taken into consideration when formulating a plan for the post primary schools.

A detailed economic appraisal should be undertaken to fully examine the post primary requirements for the area.

APPENDIX A – PRIMARY SCHOOLS

A1 BELVOIR PARK PRIMARY SCHOOL

This school was built in 1965 and extended in 1972 and 1977, and consists of 20 classbases spread over two storeys. The school houses a speech and language unit and a double nursery unit. The nursery provides pre school education for 52 children and has been in operation since 1978 and the special unit has recently been opened and currently provides special assistance to 20 pupils in key stage 2. The Department of Education capacity figure for the primary element places it into the 351 – 380 category, i.e. 13 classbases.

The school is located on a site of 1.39 hectares with a total internal floor area of 2,687m². The site is slightly below the 1.49 hectares recommended for a school falling into the 13 classbase category.

Of the 20 classbases shared between the primary school, special unit and nursery unit 7 are close to the 60m² recommended however the remaining 13 are at 50m² or below.

The most recent building condition survey indicates that an estimated £106 340 needs to be spent on sub standard areas, i.e. mechanical and electrical systems, roofs etc.

Enrolments

Belvoir Park Primary School's enrolment number is 370 and admission number is 53. In the academic year 2004/05 there were 105 surplus places.

The following table shows the enrolments and admission numbers of Belvoir Park Primary School:

YEAR	RECEPT / NURS	Y1	Y2	Y3	Y4	Y5	Y6	Y7	SU	TOTAL MAINSTREAM & SU
2004/2005	53	27	41	32	35	27	42	34	27	265
2003/2004	68	42	35	36	33	50	44	44	20	304
2002/2003		45	38	36	27	43	36	40	22	287
2001/2002		40	30	42	45	47	50	49	14	317
2000/2001		29	46	39	45	49	51	45	8	312
1999/2000		46	36	43	46	47	44	34	4	300
1998/1999		37	41	43	47	47	36	46		297
1997/1998		42	44	50	46	38	46	38		304
1996/1997		40	46	44	37	43	37	54		301
1995/1996		50	45	44	46	43	53	27		308

In May 2005 the school had 30 applicants for September 2005 admission out of a total of 53 places available.

As stated in the main body of the document, under 2.3, there are very few major housing developments in area which would impact on the controlled primary provision. It is estimated that approximately 57 additional children will require places within the local controlled schools of which Cairnshill and Newtownbreda Primary Schools are the closest.

Therefore the long term enrolment for Belvoir Park Primary School is as follows:

P1 intake over the past 3 yrs = 114

$\frac{114 \times 7}{3}$ = 266

Plus two additional classbases for the special unit.

Taking the projected 35.72% fall in the primary aged pupils in the Castlereagh Council area would give the following LTE:

114 reduced by 35.72% = 73

$\frac{73 \times 7}{3}$ = 170

Reduced LTE = 170

Plus two additional classbases for the special unit.

The two LTE calculations place the school either within the 6 or 10 classbase category plus two additional classrooms for the special unit. At present the school has a Department of Education capacity figure of 370 which is in the 13 classbase category.

Long Term Enrolment range is 170 to 266 plus two classrooms for the special unit.

The mean LTE is 218 plus two additional classrooms for the special unit.

A2 BRANIEL PRIMARY SCHOOL

This school was built in 1959 and has 18 classbases, a multi purpose hall, offices and associated ancillary and auxiliary accommodation. In addition there is an integral nursery unit at the school which has been providing pre school education since 1976 and the school has a small special unit. The Department of Education capacity figure for the primary element places it into the 381 - 410 category, i.e. 14 classbases.

The school is located on a site of 1.94 hectares with a total gross external floor area of 2,394m². The site is slightly above the 1.49 hectares recommended for a school falling into the 14 classbase category.

Of the 18 classbases 3 are used for other tasks such as IT, a library, music / television and special needs. Only five of these rooms meet the minimum 60m² required with the remaining rooms fall between 50m² and 55m².

Enrolments

Braniel Primary School's enrolment number is 408 and admission number is 58. In the academic year 2004/05 there were 110 mainstream surplus places.

The following table shows the enrolments and admission numbers of Braniel Primary School:

YEAR	RECEPT / NURS	Y1	Y2	Y3	Y4	Y5	Y6	Y7	TOTAL MAINSTREAM
2004/2005	77	43	41	49	46	34	47	38	298
2003/2004	72	40	52	44	33	47	41	56	313
2002/2003		51	45	33	47	47	56	56	335
2001/2002		43	32	46	49	56	54	44	324
2000/2001		30	49	50	55	51	46	55	336
1999/2000		47	49	56	52	46	58	45	353
1998/1999		50	57	50	47	57	43	52	356
1997/1998		58	46	46	56	41	53	39	339
1996/1997		43	49	55	44	54	41	32	318
1995/1996		43	58	42	56	45	31	42	317

In May 2005 the school had 41 applicants for September 2005 admission out of a total of 58 places available.

As stated in the main body of the document, under 2.3, there are very few major housing developments in area which would impact on the controlled primary provision. It is estimated that approximately 57 additional children will require places within the local controlled schools of which Cairnshill and Newtownbreda Primary Schools are the closest.

Therefore the long term enrolment for Braniel Primary School is as follows:

P1 intake over the past 3 yrs = 134

$\frac{134 \times 7}{3}$ = 313

Taking the projected 35.72% fall in the primary aged pupils in the Castlereagh Council area would give the following LTE:

134 reduced by 35.72% = 86

$\frac{86 \times 7}{3}$ = 201

Reduced LTE = 201

Taking the accommodation needs into consideration the two LTE calculations place the school within either the 9 or 13 classbase category. At present the school has a Department of Education capacity figure of 408 which is in the 14 classbase category.

Long Term Enrolment range is 201 to 313

The mean LTE is 257

A3 CAIRNSHILL PRIMARY SCHOOL

This school was built in 1966 and extended in 1968; the school consists of 22 classrooms, a multi purpose hall, offices and associated ancillary and auxiliary accommodation. Three of the classrooms are located in a timber framed building.

The school is located on a site of 1.38 hectares with a total internal floor area of 285m². The school site is considerably smaller than the recommended minimum of 2.07 hectares for a 22 classbase school. The recommended minimum internal floor area is 307m². This site is 2/3 of the recommended size.

Eleven of the classrooms are under the recommended size of 60m². The school has a lack of resource areas.

The accommodation is substandard and in poor condition, requiring immediate work to mechanical and electrical infrastructures, floor and ceiling areas. The most recent building condition survey indicates that an estimated £249,085 needs to be spent on those areas most in need.

A new single nursery unit, to cater for 52 part-time pupils, was recently established at the school.

Enrolments

Cairnshill Primary School's enrolment number is 583 and admission number is 83. In the academic year 2004/05 there were 63 surplus places.

YEAR	RECEPT / NURS	Y1	Y2	Y3	Y4	Y5	Y6	Y7	TOTAL
2004/2005	52	50	75	67	86	72	81	89	520
2003/2004	52	77	68	85	73	79	88	89	559
2002/2003		71	84	70	80	85	88	80	558
2001/2002		83	71	83	84	88	80	72	561
2000/2001		72	81	85	88	83	74	83	566
1999/2000		83	80	87	80	75	82	57	544
1998/1999		81	86	82	76	84	58	70	537
1997/1998		85	84	78	81	57	68	74	527
1996/1997		83	72	83	55	68	72	64	497
1995/1996		74	82	60	69	72	64	53	474

In May 2005 the school had 65 applicants for September 2005 admission out of a total of 83 places available.

As stated in the main body of the document, under 2.3, there are very few major housing developments in area which would impact on the controlled primary provision. It is estimated that approximately 57 additional children will require places within the local controlled schools of which Cairnshill and Newtownbreda Primary Schools are the closest.

Therefore the long term enrolment for Cairnshill Primary School is as follows:

P1 intake over the past 3 yrs = 198

$\frac{198 \times 7}{3}$ = 462

Taking the projected 35.72% fall in the primary aged pupils in the Castlereagh Council area would give the following LTE:

198 reduced by 35.72% = 127

$\frac{127 \times 7}{3}$ = 296

Reduced LTE = 296

Taking the accommodation needs into consideration the two LTE calculations place the school within either the 11 or 16 classbase category. At present the school has a Department of Education capacity figure of 583 which is in the 20 classbase category.

Long Term Enrolment range is 296 to 462

The mean LTE is 379

There would be sufficient surplus places in the long term to easily absorb the extra children generated by the new developments.

A4 CREGAGH PRIMARY SCHOOL

A school has been located on the current site since 1939 and the old school building was replaced by a new school building in 2002. The new building comprises 7 classbases, resource areas, multi purpose hall and associated ancillary and auxiliary accommodation.

The school is located on a site of 0.79 hectares recommended for a school falling into the 7 classbase category.

As the new school building is less than two years old there has been no condition survey carried out.

Enrolments

Cregagh Primary School's enrolment number is 203 and admission number is 29. In the academic year 2004/05 there were 44 mainstream surplus places.

The following table shows the enrolments and admission numbers of Cregagh Primary School:

YEAR	Y1	Y2	Y3	Y4	Y5	Y6	Y7	SU	TOTAL MAINSTREAM
2004/2005	24	28	17	28	16	16	20	10	159
2003/2004	25	18	27	15	17	19	13	11	145
2002/2003	20	26	18	17	24	13	26	10	154
2001/2002	27	17	15	23	14	25	19	12	152
2000/2001	16	12	19	14	26	20	30	13	150
1999/2000	10	18	10	25	19	28	28	12	150
1998/1999	16	11	24	21	26	25	27	17	167
1997/1998	10	22	20	27	24	27	16	15	161
1996/1997	23	19	27	24	26	15	21	13	168
1995/1996	18	25	26	28	14	21	24	14	170

In May 2005 the school had 20 applicants for September 2005 admission out of a total of 29 places available.

As stated in the main body of the document, under 2.3, there are very few major housing developments in area which would impact on the controlled primary provision. It is estimated that approximately 57 additional children will require places within the local controlled schools of which Cairnshill and Newtownbreda Primary Schools are the closest.

Therefore the long term enrolment for Cregagh Primary School is as follows:

$$\text{P1 intake over the past 3 yrs} = 69$$

$$\frac{69 \times 7}{3} = 161$$

Taking the projected 35.72% fall in the primary aged pupils in the Castlereagh Council area would give the following LTE:

$$69 \text{ reduced by } 35.72\% = 44$$

$$\frac{44 \times 7}{3} = 103$$

$$\text{Reduced LTE} = 103$$

Taking the accommodation needs into consideration the two LTE calculations place the school either within the 4 or 6 classbase category plus two additional classrooms for the special unit. At present the school has a Department of Education capacity figure of 203 which is in the 7 classbase category.

Long Term Enrolment range is 103 to 161 plus two classrooms for the special unit.

The mean LTE is 132 plus two additional classbases for the special unit.

A5 GILNAHIRK PRIMARY SCHOOL

Gilnahirk Primary School is in east Belfast. The existing permanent school building was constructed in 1939 and extended in 1960. The accommodation comprises of 18 classrooms, assembly hall, kitchen, toilets and offices. The kitchen and dining area is located in a separate block.

The five temporary classrooms which were located at the school for a number of years have been replaced by a permanent extension of three classbases.

All except 3 of the permanent classrooms are below the minimum Building Handbook standard. The cramped conditions at the school have impeded the organisation of practical activities.

The most recent building condition survey indicates that an estimated £264 850 needs to be spent on sub standard areas, i.e. mechanical and electrical systems, decoration etc.

Enrolments

The enrolment at the school has slightly declined over the past ten years, with only minor fluctuations in the numbers. The enrolment details are as follows:

YEAR	Y1	Y2	Y3	Y4	Y5	Y6	Y7	TOTAL MAINSTREAM
2004/2005	53	58	57	61	57	60	73	419
2003/2004	60	59	61	55	60	69	58	422
2002/2003	56	60	56	59	67	60	60	418
2001/2002	60	57	60	66	59	61	71	434
2000/2001	55	60	64	61	62	67	62	431
1999/2000	58	64	63	64	70	62	66	447
1998/1999	65	65	65	71	64	66	61	457
1997/1998	66	65	69	67	66	61	65	459
1996/1997	65	68	68	67	63	65	70	466
1995/1996	68	69	68	62	67	70	66	470

Department of Education enrolment number is 445 and the admission number is 60. In the academic year 2004/05 there were 26 surplus places.

In May 2005 the school had 68 applicants for September 2005 admission out of a total of 60 places available.

As stated in the main body of the document, under 2.3, there are very few major housing developments in area which would impact on the controlled primary provision. It is estimated that approximately 57 additional children will require places within the local controlled schools of which Cairnshill and Newtownbreda Primary Schools are the closest.

Therefore the long term enrolment for Gilnahirk Primary School is as follows:

P1 intake over the past 3 yrs = 169

$\frac{169 \times 7}{3}$ = 394

Taking the projected 35.72% fall in the primary aged pupils in the Castlereagh Council area would give the following LTE:

169 reduced by 35.72% = 109

$\frac{109 \times 7}{3}$ = 254

Reduced LTE = 254

Taking the accommodation needs into consideration the two LTE calculations place the school within either the 9 or 14 classbase category. At present the school has a Department of Education capacity figure of 445 which is in the 16 classbase category.

Long Term Enrolment range is 254 to 394

The mean LTE is 324.

A6 KNOCKBREDA PRIMARY SCHOOL

This school was built in 1958 and is located on the same campus as Knockbreda High School and Knockbreda Nursery School. The accommodation comprises 7 classrooms, group room, 2 learning centre classrooms used by a special unit, library, computer room, multi purpose hall, offices and associated ancillary and auxiliary accommodation. The school has a Department of Education enrolment of 225 with an admission number of 30. This places the school into the 8 classbases category of 206 – 230 pupils.

The school is located on a site of 0.53 hectares with a total floor area of 1,249m². The site is below the 1.02 hectares recommended for a school falling into the 8 classbase category however the primary school does have access to facilities located on the adjacent high school site.

The school is largely single storey with a small second storey and only two of the classbases meet the 60m² recommended. The most recent building condition survey indicates that an estimated £283,170 of work is required to be carried out to the school on areas such as roofs, walls, decoration and M & E.

Enrolments

Knockbreda Primary School's enrolment number is 225 and admission number is 30. In the academic year 2004/05 there were 61 mainstream surplus places.

The following table shows the enrolments and admission numbers of Knockbreda Primary School:

YEAR	Y1	Y2	Y3	Y4	Y5	Y6	Y7	Su	TOTAL MAINSTREAM & SU
2004/2005	14	20	16	28	22	21	18	25	164
2003/2004	20	18	24	22	20	17	27	22	170
2002/2003	20	23	22	20	16	28	27	25	181
2001/2002	20	21	23	18	29	28	26	27	192
2000/2001	22	21	17	28	30	26	27	24	195
1999/2000	21	16	30	31	26	26	26	25	201
1998/1999	20	27	31	27	27	27	21	24	204
1997/1998	27	32	26	27	30	20	25	27	214
1996/1997	32	26	26	27	21	25	20	26	203
1995/1996	28	24	25	22	25	19	19	25	187

In May 2005 the school had 17 applicants for September 2005 admission out of a total of 30 places available.

As stated in the main body of the document, under 2.3, there are very few major housing developments in the area which would impact on the controlled primary provision. It is estimated that approximately 57 additional children will require places within the local controlled schools of which Cairnshill and Newtownbreda Primary Schools are the closest.

Therefore the long term enrolment for Knockbreda Primary School is as follows:

P1 intake over the past 3 yrs = 54

$\frac{54 \times 7}{3}$ = 126

Taking the projected 35.72% fall in the primary aged pupils in the Castlereagh Council area would give the following LTE:

54 reduced by 35.72% = 35

$\frac{35 \times 7}{3}$ = 82

Reduced LTE = 82

Taking the accommodation needs into consideration the two LTE calculations place the school within the 3 or 5 classbase category plus two additional classrooms for the special unit. At present the school has a Department of Education capacity figure of 225 which is in the 8 classbase category.

Long Term Enrolment range is 82 to 126 plus two additional classrooms for the special unit

The mean LTE is 104 plus two additional classbases for the special unit.

A7 LEADHILL PRIMARY SCHOOL

This school was built in 1968 and the current accommodation comprises 7 permanent classbases plus three temporary classbases, library/ computer room, resource area, multi purpose hall, offices and associated ancillary and auxiliary accommodation. The school has a Department of Education figure of 210 and admission number of 30.

The school is located on a site of 0.98 hectares with a total floor area of 1,271m². The site is below the 1.02 hectares recommended for a school falling into the 8 classbase category.

The most recent building condition survey indicates that an estimated £84,296 of work is required to be carried out to the school on areas such as roofs, decoration and M & E.

Enrolments

Leadhill Primary School's enrolment number is 210 and admission number is 30. In the academic year 2004/05 there were 30 mainstream surplus places.

The following table shows the enrolments and admission numbers of Leadhill Primary School:

YEAR	Y1	Y2	Y3	Y4	Y5	Y6	Y7	TOTAL MAINSTREAM & SU
2004/2005	19	27	24	30	28	27	25	180
2003/2004	25	23	30	29	28	24	27	186
2002/2003	23	29	28	28	24	28	31	191
2001/2002	31	26	25	26	27	30	30	195
2000/2001	27	25	28	29	30	30	26	195
1999/2000	27	28	29	30	30	26	30	200
1998/1999	28	29	30	31	26	32	32	208
1997/1998	29	31	31	26	32	32	24	205
1996/1997	32	32	28	32	33	24	32	213
1995/1996	32	28	32	32	24	32	26	206

In May 2005 the school had 13 applicants for September 2005 admission out of a total of 30 places available.

As stated in the main body of the document, under 2.3, there are very few major housing developments in area which would impact on the controlled primary provision. It is estimated that approximately 57 additional children will require places within the local controlled schools of which Cairnshill and Newtownbreda Primary Schools are the closest.

Therefore the long term enrolment for Leadhill Primary School is as follows:

$$\text{P1 intake over the past 3 yrs} = 67$$

$$\frac{67 \times 7}{3} = 156$$

Taking the projected 35.72% fall in the primary aged pupils in the Castlereagh Council area would give the following LTE:

$$67 \text{ reduced by } 35.72\% = 43$$

$$\frac{43 \times 7}{3} = 100$$

$$\text{Reduced LTE} = 100$$

Taking the accommodation needs into consideration the two LTE calculations place the school within either the 4 or 6 classbase category. At present the school has a Department of Education capacity figure of 210 which is in the 8 classbase category.

Long Term Enrolment range is 100 to 156

The mean LTE is 128.

A8 LISNASHARRAGH PRIMARY SCHOOL

This school was built in 1954 and has 16 classbases, a multi purpose hall, library, offices and associated ancillary and auxiliary accommodation. In addition there is a nursery school operating within the same site which has been providing pre school education since 1976 and the school has a small special unit operated by Longstone Special School. The Department of Education capacity figure for the primary element places it into the 436 - 465 category, i.e. 16 classbases.

The school is located on a site of 1.96 hectares with a total floor area of 2,714m². The site is slightly above the 1.58 hectares recommended for a school falling into the 14 classbase category.

The school is split over two storeys with half of the 16 classbases below the 60m² recommended. The most recent building condition survey indicates that an estimated £255,530 needs to be spent on areas such as M & E, decoration and flooring.

Enrolments

Lisnasharragh Primary School's enrolment number is 447 and admission number is 60. In the academic year 2004/05 there were 178 mainstream surplus places.

The following table shows the enrolments and admission numbers of Lisnasharragh Primary School:

YEAR	Y1	Y2	Y3	Y4	Y5	Y6	Y7	TOTAL MAINSTREAM
2004/2005	28	36	39	37	46	32	51	269
2003/2004	36	39	42	45	34	52	41	289
2002/2003	41	44	46	33	51	44	52	311
2001/2002	43	47	35	51	42	55	62	335
2000/2001	47	35	49	43	56	60	64	354
1999/2000	35	50	47	57	64	64	58	375
1998/1999	50	44	60	61	62	60	64	401
1997/1998	46	58	59	58	58	64	54	397
1996/1997	57	52	58	56	60	57	63	403
1995/1996	51	57	51	62	54	61	60	308

In May 2005 the school had 25 applicants for September 2005 admission out of a total of 60 places available.

As stated in the main body of the document, under 2.3, there are very few major housing developments in the area which would impact on the controlled primary provision. It is estimated that approximately 57 additional children will require places within the local controlled schools of which Cairnshill and Newtownbreda Primary Schools are the closest.

Therefore the long term enrolment for Lisnasharragh Primary School is as follows:

$$\text{P1 intake over the past 3 yrs} = 105$$

$$\frac{105 \times 7}{3} = 245$$

Taking the projected 35.72% fall in the primary aged pupils in the Castlereagh Council area would give the following LTE:

$$105 \text{ reduced by } 35.72\% = 68$$

$$\frac{68 \times 7}{3} = 159$$

$$\text{Reduced LTE} = 159$$

Taking the accommodation needs into consideration the two LTE calculations place the school within either the 6 or 9 classbase category. At present the school has a Department of Education capacity figure of 447 which is in the 16 classbase category.

Long Term Enrolment range is 159 to 245

The mean LTE is 202.

A9 NEWTOWNBRED A PRIMARY SCHOOL

This school was built in 1938 and the current accommodation comprises 11 permanent classbase, a reception class, resource area, multi purpose hall, offices and associate ancillary and auxiliary accommodation. The school has a Department of Education figure of 337 and admission number of 48.

The school is located on a site of 0.49 hectares with a total floor area of 1,769m². The site is below the 1.41 hectares recommended for a school falling into the 11 classbase category.

The most recent building condition survey indicates that an estimated £256,684 of work is required to be carried out to the school on areas such as roofs, decoration, walls, floor coverings and M & E.

Enrolments

Newtownbreda Primary School's enrolment number is 337 and admission number is 48. In the academic year 2004/05 there were 150 mainstream surplus places.

The following table shows the enrolments and admission numbers of Newtownbreda Primary School:

YEAR	Y1	Y2	Y3	Y4	Y5	Y6	Y7	TOTAL MAINSTREAM
2004/2005	20	27	22	28	25	23	42	187
2003/2004	24	22	28	23	24	40	24	185
2002/2003	21	26	23	24	42	22	34	192
2001/2002	26	24	24	43	24	34	31	206
2000/2001	28	24	40	21	33	31	34	211
1999/2000	23	40	19	31	32	33	39	217
1998/1999	39	19	30	32	34	40	32	226
1997/1998	20	29	33	34	38	32	34	220
1996/1997	25	36	33	42	33	35	25	229
1995/1996	35	32	40	33	35	25	30	230

In May 2005 the school had 8 applicants for September 2005 admission out of a total of 48 places available.

As stated in the main body of the document, under 2.3, there are very few major housing developments in the area which would impact on the controlled primary provision. It is estimated that approximately 57 additional children will require places within the local controlled schools of which Cairnshill and Newtownbreda Primary Schools are the closest.

Therefore the long term enrolment for Newtownbreda Primary School is as follows:

$$\text{P1 intake over the past 3 yrs} = 65$$

$$\frac{65 \times 7}{3} = 152$$

Taking the projected 35.72% fall in the primary aged pupils in the Castlereagh Council area would give the following LTE:

$$65 \text{ reduced by } 35.72\% = 42$$

$$\frac{42 \times 7}{3} = 98$$

$$\text{Reduced LTE} = 98$$

Taking the accommodation needs into consideration the two LTE calculations place the school within either the 4 or 6 classbase category. At present the school has a Department of Education capacity figure of 337 which is in the 12 classbase category.

Long Term Enrolment range is 98 to 152.

The mean LTE is 125.

APPENDIX B – POST PRIMARY SCHOOLS

B1 KNOCKBREDA HIGH SCHOOL

Knockbreda High School is a co-educational secondary school, which was built in 1959. The school is situated on a 3.2876 hectare site along the Upper Knockbreda Road. The high school shares the site with Knockbreda Primary School.

Knockbreda High School attracts children from a wide variety of primary schools from both the South Eastern and Belfast Board areas. In recent years the school's enrolment grew steadily to 673 but declined slightly to 655 in 2004/05.

Temporary accommodation has been provided over the years to accommodate the increasing enrolment and the changing curriculum needs of the school. At present there are 15 temporary classrooms at the school, the oldest being 31 years old, and are used to teach a wide range of subjects such as maths, English, RE and social sciences.

The total floor area of the accommodation at the school is 6,193m².

A number of items have been identified as requiring attention under the Board's maintenance programme. The most recent building condition survey indicates that an estimated £100,000 would need to be spent on areas such as the M & E, internal joinery and roofs.

Enrolments

Knockbreda High School's enrolment number is 700 and admission number is 136. In the academic year 2004/05 there were 45 mainstream surplus places.

The following table shows the enrolments and admission numbers of Knockbreda High School:

	F1	F2	F3	F4	F5	L6	Total
2004/2005	122	142	134	136	121		655
2003/2004	146	133	134	124	136		673
2002/2003	136	139	124	135	137		671
2001/2002	140	121	131	137	131	16	676
2000/2001	125	133	130	128	137	6	659
1999/2000	136	133	120	136	112	20	657
1998/1999	137	122	137	113	95	20	624
1997/1998	131	139	116	97	104	9	596
1996/1997	141	118	100	107	123	31	620

In May 2005 the school had 112 applicants for September 2005 admission out of a total of 136 places available.

The long term enrolment figure for Knockbreda High School is 675 which has been approved by the Department of Education. However this LTE is subject to periodic review and it is likely that the figure will fall to approximately 600.

B2 LISNASHARRAGH HIGH SCHOOL

Lisnasharragh High School is a co-educational secondary school, which was built in 1956. The school is situated on a 2.26 hectare site along the Newtownbreda Road.

Lisnasharragh High School attracts children from a wide variety of primary schools from both the South Eastern and Belfast Board areas. In recent years the school’s enrolment has steadily declined and as of October 2004 stands at 242 children which is 308 below the Department of Education figure of 550 for the school.

The total floor area of the accommodation at the school is 6,651m².

A number of items have been identified as requiring attention under the Board’s maintenance programme. The most recent building condition survey indicates that an estimated £341,435 would need to be spent on areas such as the M & E, internal joinery, decoration and roofs.

Enrolments

Lisnasharragh High School’s enrolment number is 550 and admission number is 110. In the academic year 2003/04 there were 288 mainstream surplus places.

The following table shows the enrolments and admission numbers of Knockbreda High School:

	F1	F2	F3	F4	F5	L6	Total
2004/2005	49	57	60	46	30		242
2003/2004	58	58	47	30	69		262
2002/2003	61	45	31	67	61		265
2001/2002	40	29	68	61	85	7	290
2000/2001	28	67	62	86	76	7	326
1999/2000	63	60	84	75	85	6	373
1998/1999	61	83	72	85	87		388
1997/1998	81	74	85	86	76		402
1996/1997	83	88	88	80	106		445

In May 2005 the school had 28 applicants for September 2005 admission out of a total of 110 places available.

As with the primary schools a range of long term enrolments has been calculated to take account of the projected decline in the primary aged population in the main contributory primary schools.

Normal LTE = 204
 Reduced LTE = 159
 Mean LTE = 182

B3 NEWTOWNBREDA HIGH SCHOOL

Newtownbreda High School is a co-educational secondary school, which was built in 1954. The school is situated on a 6.96 hectare site along the Newtownbreda Road.

Newtownbreda High School attracts children from a wide variety of primary schools from both the South Eastern and Belfast Board areas. In recent years the school's enrolment grew steadily to 837 pupils but declined slightly to 825 in 2004/05.

Temporary accommodation has been provided over the years to accommodate the increasing enrolment and the changing curriculum needs of the school. At present there are 6 temporary classrooms at the school and which used to teach a wide range of subjects such as art, English, science and one is used by the recently introduced 6th form.

The total floor area of the accommodation at the school is 7,490m².

A number of items have been identified as requiring attention under the Board's maintenance programme. The most recent building condition survey indicates that an estimated £367,122 would need to be spent on areas such as the M & E, internal joinery and roofs.

Enrolments

Newtownbreda High School's enrolment number is 850 and admission number is 170. In the academic year 2004/05 there were 25 mainstream surplus places.

The following table shows the enrolments and admission numbers of Newtownbreda High School:

	F1	F2	F3	F4	F5	L6	U6	Total
2004/2005	132	163	166	166	168	15	15	825
2003/2004	164	171	166	172	148	16		837
2002/2003	171	166	170	150	148			805
2001/2002	171	172	154	149	157			803
2000/2001	172	158	142	157	157			786
1999/2000	167	143	152	154	158			774
1998/1999	155	155	157	162	158			787
1997/1998	163	164	163	159	151			800
1996/1997	172	161	160	152	148			793

In May 2005 the school had 124 applicants for September 2005 admission out of a total of 170 places available.

As with the primary schools a range of long term enrolments have been calculated to take account of the projected decline in the primary aged population in the main contributory primary schools.

Normal LTE	=	720
Reduced LTE	=	613
Mean LTE	=	667